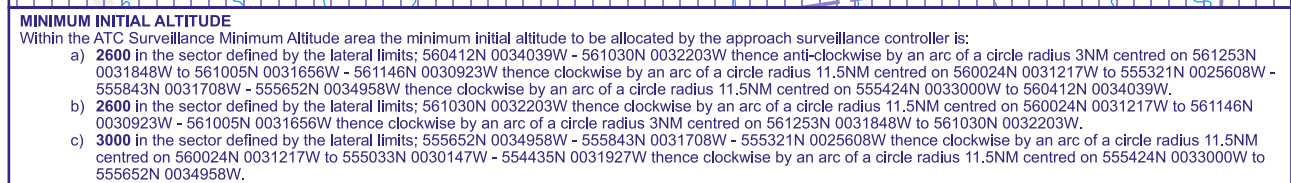


EDINBURGH



The minimum altitude to be allocated by the approach surveillance controller will be either the Minimum Sector Altitude, or **1000** above any fixed obstacles:

- ## LOSS OF COMMUNICATION PROCEDURES

Continue visually or by means of an appropriate approved final approach aid. If not possible proceed at **3000**, or last assigned level if higher to **NDB(L) EDN†**, except for RWY 06, in which case proceed to **NDB(L) UW**.

Continue visually or by means of an appropriate final approach aid. If not possible follow the Missed Approach Procedure to **NDB(L) EDN†**, except for RWY 06, in which case proceed to **NDB(L) UW**.

† In all cases where the aircraft returns to the holding facility the procedure to be adopted is the Radio Failure Procedure detailed at ENR 1.1.3.4 or the procedure for Scottish TMA & Edinburgh CTR detailed at (EGPH AD 2.22).

1. Levels shown are based on QNH.

- CHANGE (8/25):** AD ELEVATION REVISED. AREAS A, B MINIMUM INITIAL ALTITUDES REVISED.